

# Expanding into palliative care?

## 5 success factors for value-based palliative care



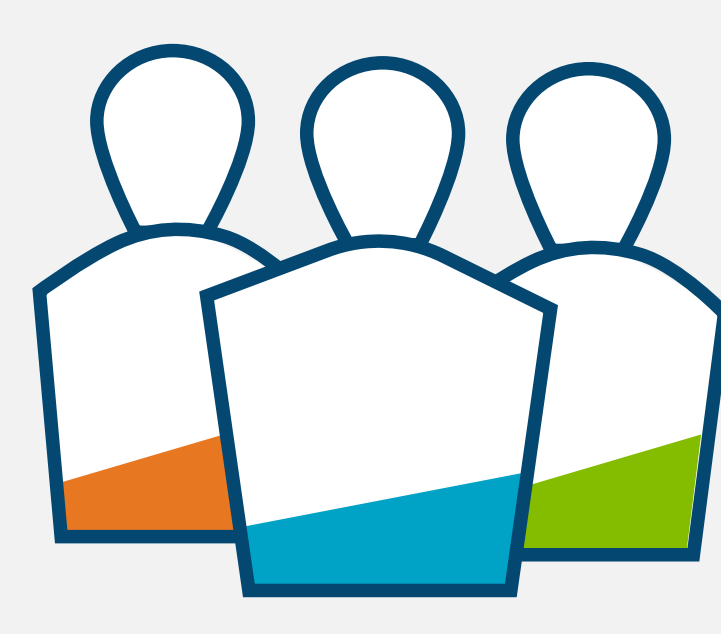
Post-acute organizations are facing big decisions about how to grow in the coming years.

With the continued expansion of value-based care models, there's no better time than right now to launch a palliative care service line.



**95%**

of patients with serious illness do not receive palliative care



**90 million**

Americans live with serious illness



**\$4,000**

How much palliative care can reduce healthcare costs per patient

Here's how organizations can drive palliative care expansion and succeed with value-based contracts.

**1**

Use a single EHR across all service lines to reduce data entry errors

**66%**

of provider organizations believe data entry errors contribute significantly to duplicate records

**2**

Ensure your EHR is certified to support interdisciplinary, patient-centered care

**Providers must**

use ONC-certified EHR systems to receive Medicare/Medicaid incentive payments

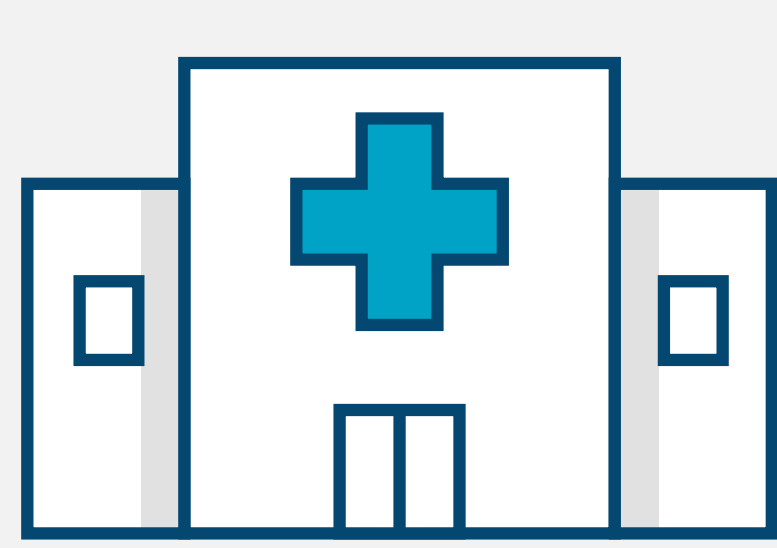
**3**

Use population health management tools to stratify high-risk, high-cost patients

**85%**

of healthcare costs stem from chronic disease care

**4**



Optimize electronic data sharing to reduce hospital readmissions

**\$26 billion:** annual cost to Medicare for hospital readmissions

**5**



Measure outcomes and demonstrate value with real-time patient data

**80-90%** of payer contracts will be value-based within a few years

It's time to make strategic decisions on how to diversify and expand your capabilities.

Is it time to add **palliative care**?

Connect with us to learn how



**Netsmart**

ntst.com | 1.800.472.5509

### Sources

Center to Advance Palliative Care

[https://media.capc.org/filer\\_public/68/bc/68bc93c7-14ad-4741-9830-8691729618d0/capc\\_press-kit.pdf](https://media.capc.org/filer_public/68/bc/68bc93c7-14ad-4741-9830-8691729618d0/capc_press-kit.pdf)

New England Journal of Medicine Catalyst Insights Council

<https://catalyst.nejm.org/doi/full/10.1056/CAT.19.0653>

Health IT Analytics

<https://catalyst.nejm.org/doi/full/10.1056/CAT.19.0653>

Center for Health Information & Analysis

<https://www.chiamass.gov/assets/Uploads/A-Focus-on-Provider-Quality-Jan-2015.pdf>

Lumeris

<https://www.lumeris.com/the-state-of-value-based-care-readiness/>